

Overview

JMRI on CD-ROM is the electronic version of the print publication of the International Society for Magnetic Resonance in Medicine - the *Journal of Magnetic Resonance Imaging* - and offers you literature access as never before...

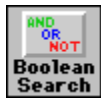
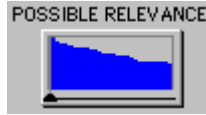
- Seven years of the journal with full editorial content on a single CD-ROM - carry your library in your pocket!
- High quality display of figures and tables at three resolutions - thumbnail, standard and double.
- Bibliography links to MEDLINE records give you abstracts for cited articles in many other journals.
- Fuzzy and Boolean logic make finding articles simple and fast.
- Annual updates at a modest price let you maintain the convenience of this "electronic binding".
- Acclaimed *Knowledge Finder* search software for Windows™ and Macintosh® makes content access intuitive with minimal learning.

Searching



Finding the article you want is as easy as just typing the few words that you think best characterize the article. *Knowledge Finder's* unique fuzzy logic searching uses precise

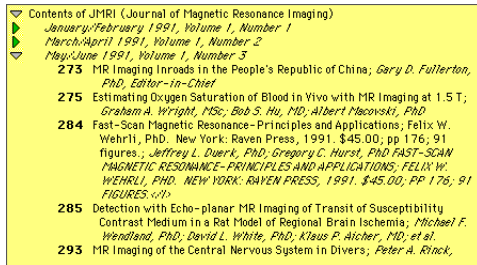
mathematical analysis to judge how closely each article appears to match your search query. And search results are presented in order of likely relevance, showing you the closest matches first, and saving you time reviewing search results.



For precise searching, just click a button to activate *Knowledge Finder's* Boolean Search mode. With the traditional Boolean operators, nested parenthesization and truncation, you can fine tune your search to identify the specific article for which you're looking.

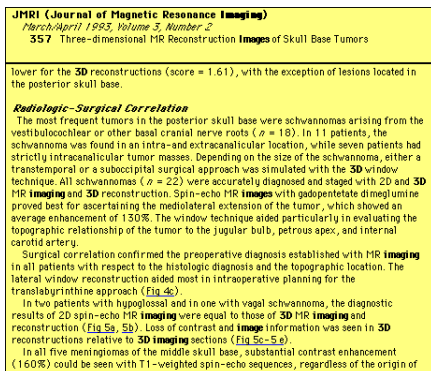
Table-of-Contents

browsing lets you quickly view all of the articles in a particular issue. The hierarchical browser also lets you open multiple Contents windows, so you can see the contents of several issues simultaneously.



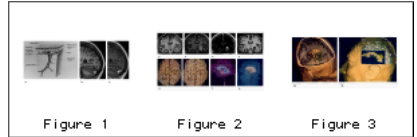
Article Display

JMRI articles are displayed on your computer screen showing all of the text, symbols and equations contained in the original print article. References to figures, tables and citations in the text are "hot-linked", so that you just click on the reference in the text to see the corresponding item. Flexible window re-sizing lets you organize your screen to suit you needs. Article text, optionally including figures and tables, can be printed.



Thumbnails

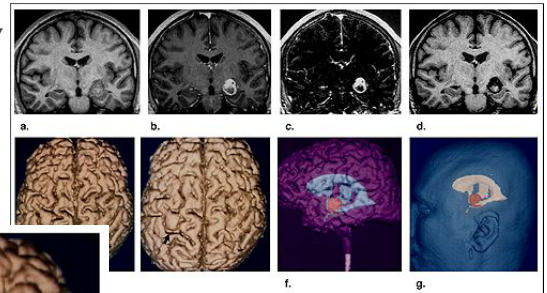
Whenever you open an article, *Knowledge Finder* presents simultaneously and quickly a window with overview thumbnail images of all of the figures and tables in the article. This gives you an "image table-of-contents" for the article, and helps you find an image by pattern recognition, rather than just by words. Click once on any image, and the full figure or table appears almost instantaneously.



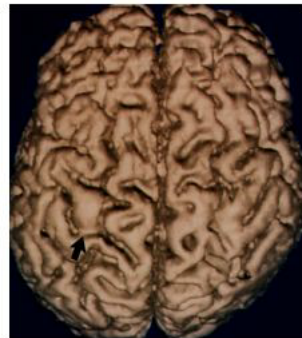
Figures and Tables

Every figure and table from the print publication is included on the CD-ROM. You can

view color and gray scale halftones at their standard size, and at double resolution for enhanced image clarity.



Frontal lobe ependymoma, with effects of edge definition. (a, b) Precontrast (a) (b) 3D NP-RAGE coronal images. (c) "Contrast volume" image created by subtracting image in b from image in a. (d) Defined-edge image created by subtracting image in a. (e) Surface brain renderings based on the precontrast (left) and defined-



Ergonomically-designed image scrolling and panning makes viewing of large images convenient. Line drawings, graphs, charts and tables are displayed in independent windows, and can also be displayed at double resolution.

Linked Abstracts

All bibliographic references in the articles have been matched against the National Library of Medicine's MEDLINE® database. Where available, the MEDLINE abstract and record have been incorporated into the JMRI CD-ROM database. An indicator in the on-screen References window tells you the abstract is available for immediate viewing.

Equipment Requirements

To use JMRI on CD-ROM with *Knowledge Finder*, you'll need a PC/compatible or Macintosh computer:

For Windows (3.x, 95, 98 and NT) you'll need an 80486 or better CPU (Pentium recommended, 75MHz or faster) with 16MB RAM, at least SVGA video, a mouse, and a CD-ROM player (faster is better!).

For the Macintosh, you'll need System 7.1 or later, a color Macintosh (68030 CPU or later recommended) with 16MB RAM, and a CD-ROM player (again, faster is better!).

Knowledge Server® and *Knowledge Host*®, also available from Aries Systems, let you access your *Knowledge Finder* databases in a file server or client/server network environment. Please contact Aries Systems or your authorized *Knowledge Finder* dealer for details.

Knowledge Finder, Knowledge Server, the Pennant logo, and "Enhancing the Power of Knowledge" are trademarks of Aries Systems Corporation. All other trademarks referenced herein are the property of their respective owners. Content of JMRI on CD-ROM Copyright © 1991-1997, International Society for Magnetic Resonance in Medicine. Specifications subject to change without notice or liability to Aries Systems Corporation or the International Society for Magnetic Resonance in Medicine. Copyright © 1998, Aries Systems Corporation. All Rights Reserved.

Order Form

1. SHIPPING AND BILLING INFORMATION

SHIP TO:

Name: _____
 Department: _____
 Institution: _____
 Address: _____
 City: _____
 State: _____ ZIP/Post Code: _____
 Country: _____
 Telephone (IMPORTANT!): _____
 Fax Phone (IMPORTANT!): _____

BILL TO:

Name: _____
 Department: _____
 Institution: _____
 Address: _____
 City: _____
 State: _____ ZIP/Post Code: _____
 Country: _____
 Telephone (IMPORTANT!): _____
 Fax Phone (IMPORTANT!): _____

2. CREDIT INFORMATION

So that we may ship your order immediately, please select one of the following:

- Approved Purchase Order enclosed
- Payment enclosed/US\$ only, checks drawn on US banks
- Charge to MasterCard/VISA/American Express
 Card Number: _____
 Name: _____
 Expiration: _____

3. ABOUT YOUR COMPUTER...

For our technical support records, please tell us about the computer on which you'll use the CD-ROM (we must have this information if you're ordering the network version):

- PC/compatible - Model: _____
- Macintosh - Model: _____
- If you're ordering a network license, please indicate the type of server on which the CD-ROM will be loaded:

4. ITEMS TO BE ORDERED

MODEL NUMBER	DESCRIPTION	QUANTITY	UNIT PRICE	TOTAL PRICE
JMRI-S917P	<u>JMRI on CD-ROM, Personal Use license (ISMRM Member*)</u>	_____	<u>\$220.00*</u>	_____
JMRI-917P	<u>JMRI on CD-ROM, Personal Use license (Non-Member)</u>	_____	<u>\$295.00</u>	_____
JMRI-917I	<u>JMRI on CD-ROM, Institutional Use license</u>	_____	<u>\$695.00</u>	_____
JMRI-917N	<u>JMRI on CD-ROM, Network Use license</u>	_____	<u>\$1,195.00</u>	_____
		SUBTOTAL		_____
If delivery is in Massachusetts, Sales Tax (if exempt, please attach certificate)				_____
Shipping/handling for destinations outside the U.S., add \$30 FOR EACH COPY ORDERED				_____
		ORDER TOTAL		_____

* **ISMRM Members must provide active Membership # to qualify for special rate: #** _____

5. TERMS

Payment is due in full in advance or upon receipt of ordered items. A 1.5% per month periodic **FINANCE CHARGE** will be applied to all amounts unpaid after thirty (30) days. This compares to an **ANNUAL PERCENTAGE** of eighteen (18) percent.

6. SEND ORDER TO:

Aries Systems Corporation
 200 Sutton Street
 North Andover, Massachusetts 01845 USA
 (USA) (978) 975-3811

OR FAX TO: